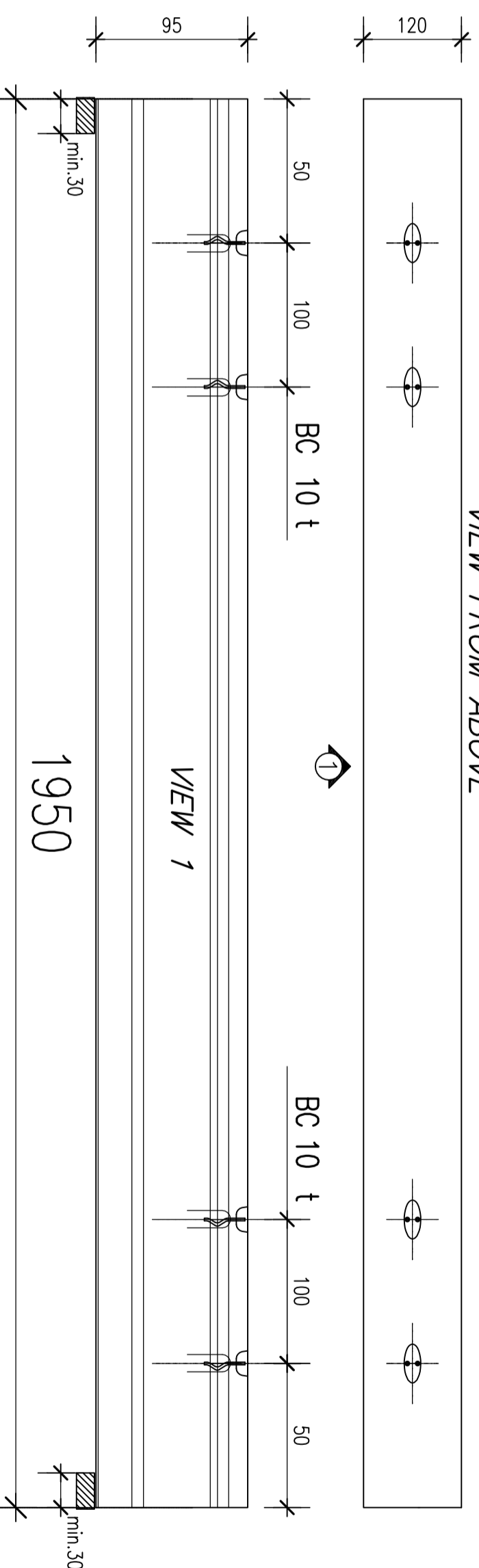
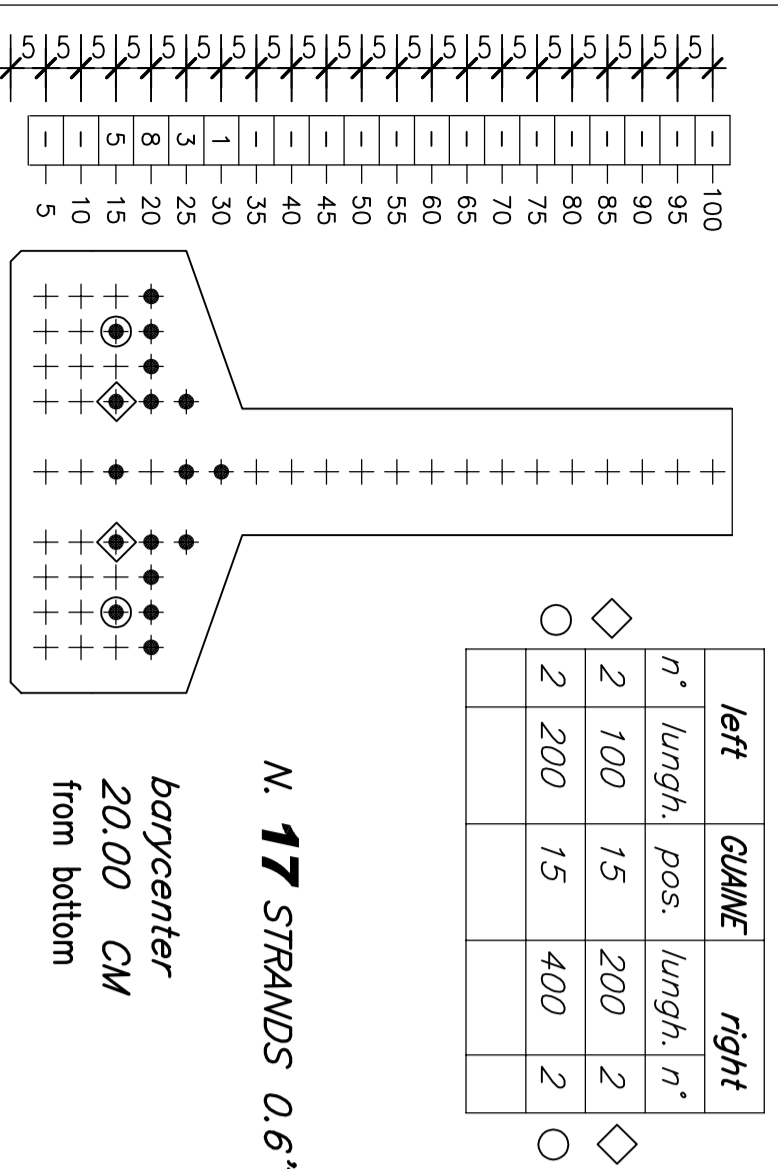


VIEW FROM ABOVE



DESIGNS OUTSIDE SCALE

LOADS

VARIABLE : 1200 daN/ml
PERMANENT : 800 daN/ml
TOTAL : 2000 daN/ml

Cost in place concrete, self-weight excluded

MATERIALS DATA

CONCRETE C45/55:
Minimum Charac. Cylinder Strength
f_{ckj} ≥ 330 daN/cm²
f_{ck} ≥ 450 daN/cm²
CONVENTIONAL REINFORCING BARS:
STEEL TYPE B450C
f_{yk} ≥ 4500 daN/cm²
f_{tk} ≥ 5400 daN/cm² A5>12%

PRESTRESSING STEEL:

seven wire low relaxation strands
0.6 Diam.
Jack tension $\hat{\sigma}_{ap}$ = 140350 daN/cm²
Jack initial force = 19500 daN (90.6)

f_{pk} > 18600 daN/cm²
f_{p(1)k} > 16700 daN/cm²
MIN COVER C = 3.5 cm
Exposure class = XD3

PRODUCTION DEVIATIONS

length +1/-2.5 cm (<20m) ; +1/-1/800cm (>20m)
Height ± 1 cm
Width ± 1 cm
pos. Prestressing steel ± 0.5 cm
pos. Conventional Bars ± 1.5 cm
laps in different positions >40φ
min.spacing >=2 cm, >=φ max

HOISTING

angle hoisting >=45°

TRANSPORT - STORAGE

min. 20
max. 150

DESCRIPTION

BIANCHI CASSEFORME
FOOT EYE LIFTING ANCHORS
AXIAL NOM. CAP. LOAD **110** 4

DESCRIPTION

Laps different positions 40φ

INITIAL BOW HEIGHT = -1.31cm

CONCRETE

volume mc 9.48
Weight t 23.70

STANDARD PRESTRESSED CONCRETE GIRDERS

Date: 11-06-08

ENGISOFT

DESIGNAZIONE d/G (65)
(ITALY)
Web: www.engisoft.org
Mail: studi@engisoft.org

Object: Beam Type 6

N° JOB 88(C2049) Execution design

Revisions:

11-06-08

Execution design

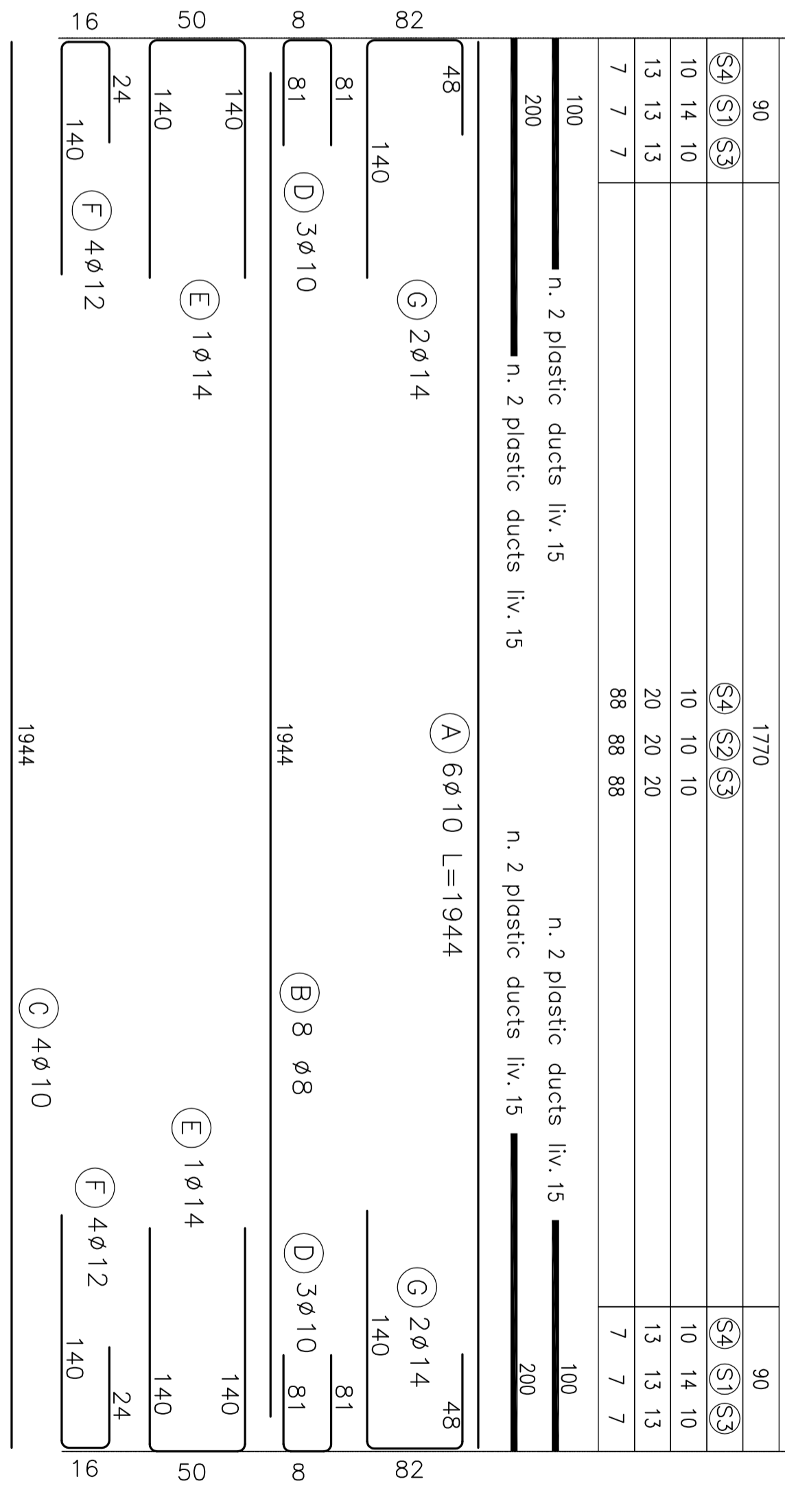
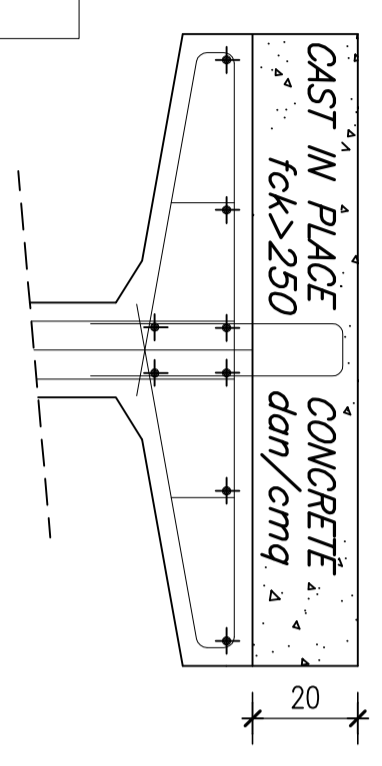
88(C2049) Execution design

88(C2049) Execution design

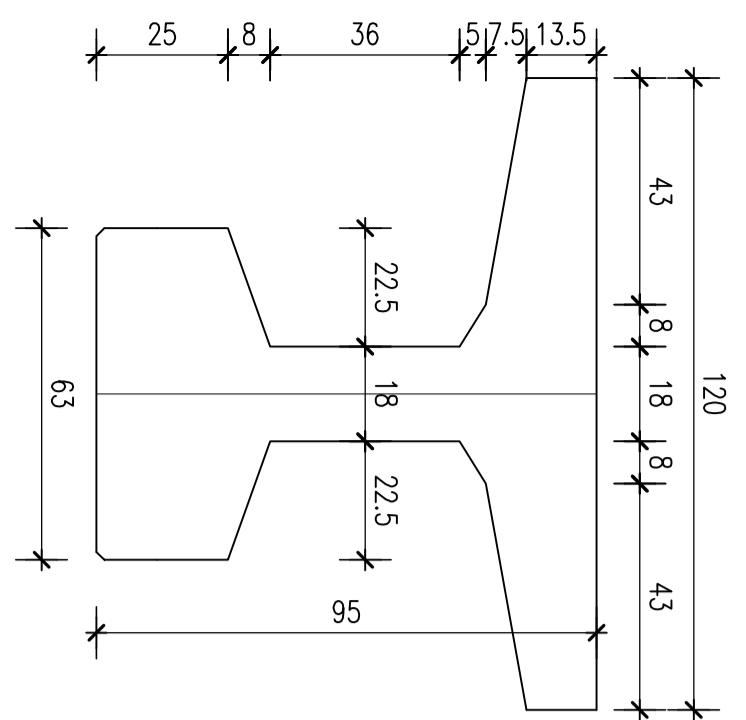
88(C2049) Execution design

LENGTH cm.
Stirrups Type
φ
SPACING
N.

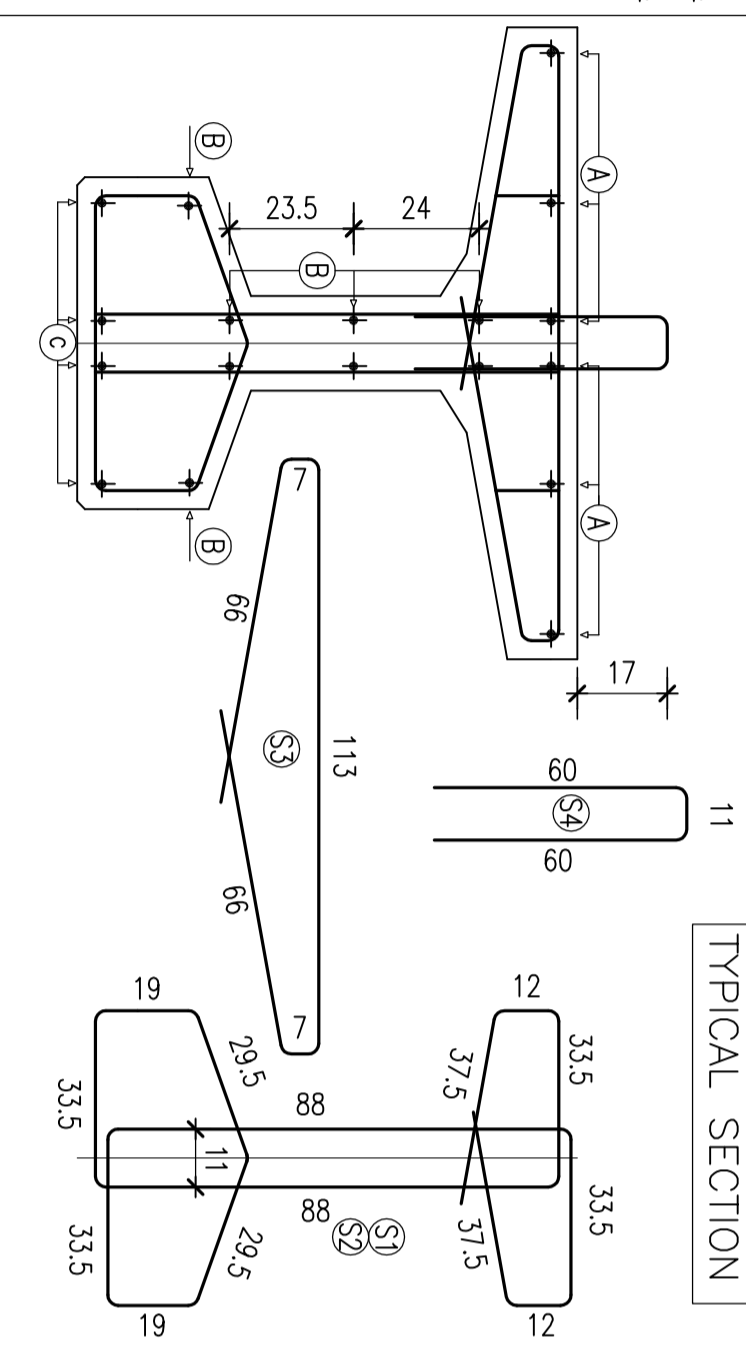
B450C		STIRRUPS B450C	
POS.	N°	φ	Length Weight
A	6	10	1944 72.3 S1 14 14 506 85.6
B	8	8	1944 61.3 S2 88 10 506 274.4
C	4	10	1944 47.9 S3 102 10 259 162.8
D	3+3	10	170 6.29 S4 102 10 131 82.3
E	1+1	14	330 7.97 S5
F	4+4	12	180 12.78
G	2+2	14	270 13.04
H	-	-	-
I	-	-	-
WEIGHT B50C daN			826.7



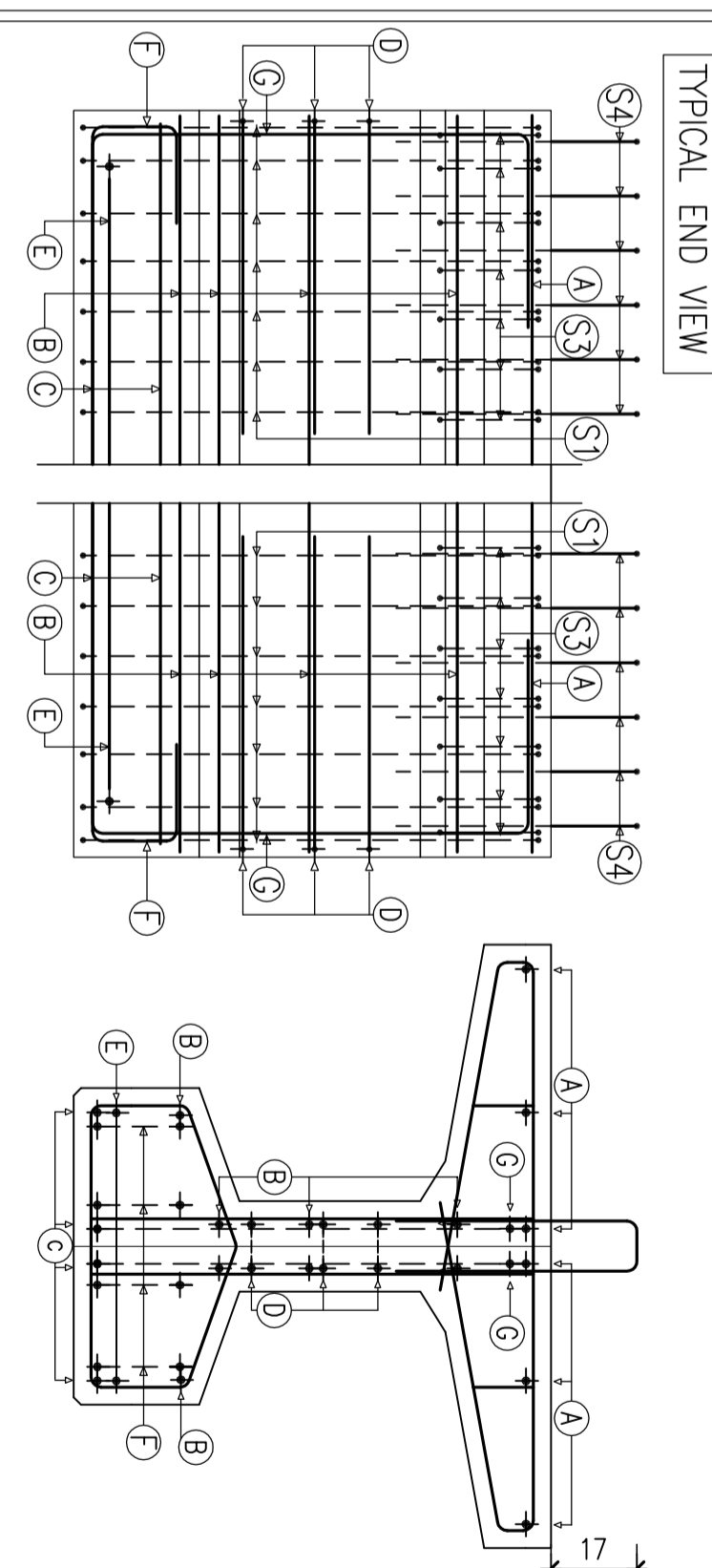
Beam Type 6



TYPICAL SECTION



TYPICAL END VIEW



88(C2049) Execution design